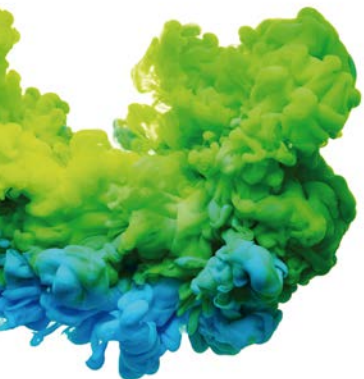


# Commercial washers





# The state-of-the-art in washing

Domus meets the needs of every customer. Our range of washers includes the most efficient features to reduce energy costs. The latest touchscreen control makes operation easier, attracts more customers, and increases the value of your laundry business.



## TOUCH II

- ✓ **TOUCH II**, user friendly and totally programmable microprocessor with a 7" touch screen and 29 preset programs
- ✓ **USB Connection**. PC software free of charge for programming, traceability, data analysis...
- ✓ **Remote communication**
- ✓ **Telemetries standard**
- ✓ **Wet cleaning ready**
- ✓ **Videos on display: ads, instructions**  
(useful for coin laundry)
- ✓ **37 languages**
- ✓ **8 dosing signals as standard + optional 6 extra dosing signals**



**TOUCH II** is the most advanced control on the market. Its new technology and large 7" touch screen will increase user satisfaction and attract new customers.



## CONNECTIVITY

- ✓ **Remote technical service**  
Machine monitoring, machine error warning, management for traceability and statistics. Remote desk and data recovery for technicians and maintenance, software update, etc.
- ✓ **Management for laundries: OPL and COIN**  
Our DOMUS IoT solution allows you to manage your laundry business (i.e. create discount programs for customers, get statistics, traceability and laundry monitoring).

**TOUCH II** evolves with **DOMUS Connect**: full remote control to ensure traceability, easy maintenance and business management features.





## EFFICIENCY

### ✓ Water savings

Possibility of configuring three levels of savings

### ✓ Optimal loading: manual indication of weight

### ✓ Intelligent Consumption: automatic adjustment of water and soap consumptions (standard)

### ✓ Prepared to be connected to water recovery tanks **ECOTANK**

### ✓ Low water consumption

The standard washing program consumes less 1 gallon of water per pound and cycle

### ✓ High G-FACTOR 500 for High spin machines

Reduced residual moisture > reduced drying time

### ✓ Water RE-CYCLE (recirculation of bath water)



## VERSATILITY

### ✓ Make to order > Customization.

Customize the machines from the factory with multiple available options

### ✓ OPL < > Coin / Token

OPL models are quickly transformable to vended with coin kits

### ✓ Electric < > Hot water

Effortlessly adjust the water heating from electric to hot water

### ✓ Drain valve < > Pump

Easily change the drainage from gravity valve to pump.

### Wet cleaning

### ✓ All washers have all features to use wet cleaning programs



## G-FACTOR

DOMUS washer extractors, whether high, medium or normal spin, are the ones with the highest G-Factor in the market, which ensures minimum residual moisture, and this translates into less energy costs during the drying cycle.

### High G-Factor reduces residual moisture and drying time

HIGH



LOW



### Coin / Token

All models are easily adjustable from OPL to COIN, simply by adding a coin kit.



### Payment systems

#### Open System

Domus equipment is prepared to work with any external payment system.



**DOMUS washers are specially designed to work with coin laundry businesses.**





## ERGONOMICS

As health and safety at work had become an important issue, our equipment is designed to be the most comfortable for users.

33.5"



- ✓ **Large door diameters in the market** Helpful, mainly for big capacity washers, for loading and unloading the garments
- ✓ **Easy opening/closing system for door lock**
- ✓ **Plinths available for 25 to 100 lb. models**  
To align loading height (door base at 33.5")
- ✓ **Reversible door**

Also, DOMUS washers are designed to work in coin laundry businesses.



## MAINTENANCE

### Easy access to parts

Washers are designed to offer an easy maintenance and reparability

### Technical menu

Machine monitoring, machine error warning, management for traceability and statistics. Remote desk and data recovery for technicians and maintenance, software update, etc.

### Equivalent parts

Most key parts are the same for all models

### Hinged panel

Easy and ergonomic access to control panel parts

**DOMUS washers require less maintenance and repair costs because they are made with high-quality components and parts, making your business easier.**





# DOMUS Product Range

## HIGH SPIN



### DHU G FACTOR 500/350

#### HIGH SPIN RANGE



- Soft mounted washers, free standing
- TOUCH II** 7" Fully programmable Touch Screen
- High extraction of water (45% residual humidity)
- DOMUS** Connect
- Stainless Steel front & top panel (25 to 100Lb.)
- Full Stainless Steel exterior (135 to 275 Lb.)



## LOW SPIN

### DLU



### G FACTOR 200/150



- LOW SPIN RANGE**
- Hard mounted washers
- DOMUS** Connect
- Stainless Steel front & top panels
- TOUCH II** 7" Fully programmable Touch Screen
- Savings by to high extraction of water (65% residual humidity)



## HEAVY PROFESSIONAL WASHERS

### HPW



### G FACTOR 450



- HIGH SPIN RANGE**
- Soft mounted washers
- Short Washing Cycles
- Full Stainless Steel panels
- TOUCH II** 4.3" Fully programmable Touch Screen **DOMUS** Connect





HIGH SPIN WASHERS   G FACTOR 500					G FACTOR 450		
CONTROL TYPE	HEATING	CAPACITY					
		25 lb.	30 lb.	40 lb.	50 lb.	65 lb.	80 lb.
TOUCH II Programmable Control	<b>E</b> Electric <b>HW</b> Hot water <b>S</b> Steam	DHU-25 TOUCH II	DHU-30 TOUCH II	DHU-40 TOUCH II	DHU-50 TOUCH II	DHU-65 TOUCH II	DHU-80 TOUCH II



HIGH SPIN WASHERS   G FACTOR 450					G FACTOR 350	
CONTROL TYPE	HEATING	CAPACITY				
		100 lb.	135 lb.	180 lb.	230 lb.	275 lb.
TOUCH II Programmable Control	<b>E</b> Electric <b>HW</b> Hot water <b>S</b> Steam	DHU-100 TOUCH II	DHU-135C TOUCH II	DHU-180C TOUCH II	DHU-230C TOUCH II	DHU-275C TOUCH II



LOW SPIN WASHERS   G FACTOR 200									G 150
CONTROL TYPE	HEATING	CAPACITY							
		25 lb.	30 lb.	40 lb.	50 lb.	65 lb.	80 lb.	100 lb.	135 lb.
TOUCH II Programmable Control	<b>E</b> Electric <b>HW</b> Hot water <b>S</b> Steam	DLU-25 TOUCH II	DLU-30 TOUCH II	DLU-40 TOUCH II	DLU-50 TOUCH II	DLU-65 TOUCH II	DLU-80C TOUCH II	DLU-100C TOUCH II	DLU-135 TOUCH II



HEAVY PROFESSIONAL WASHERS   G FACTOR 500					
CONTROL TYPE	HEATING	CAPACITY			
		20 lb.		25 lb.	
TOUCH II Programmable Control	<b>E</b> Electric <b>HW</b> Hot water	Valve HPW-0820 TOUCH II V	Pump HPW-0820 TOUCH II P	Valve HPW-1025 TOUCH II V	Pump HPW-1025 TOUCH II P

NOTE: All models can be easily converted to coin mode with a coin kit.  
Open System: All models work with any external payment system (by multi-point data).



Since 1922 DOMUS offers quality and service to its distributors and importers in more than 150 countries around the world.

[WWW.DOMUSLAUNDRY.US](http://WWW.DOMUSLAUNDRY.US)



ONNERA GROUP

**ONNERA USA, Inc.**  
13105 NW 47th Avenue, Opa Locka  
Florida, 33054 USA  
Ph. 305 477 1680

Headquartered in Miami, Florida, Domus provides comprehensive service and support to its network of distributors and customers in North America. Domus is part of ONNERA Group, an international group that markets its products over five continents. With 9 manufacturing plants distributed around the world, Onnera Group offers solutions adapted to each market.

